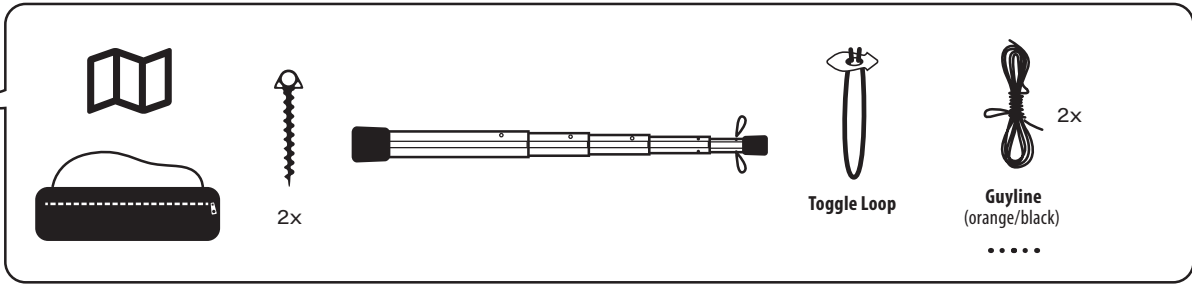


TENSA SOLO

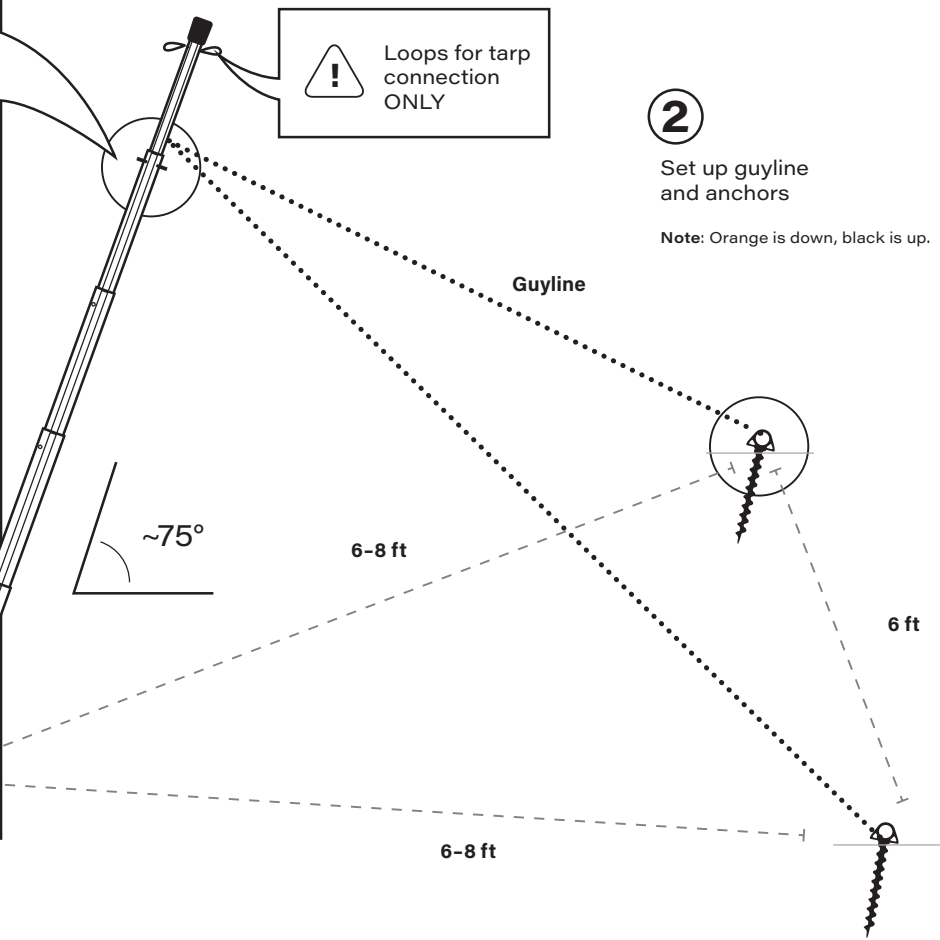
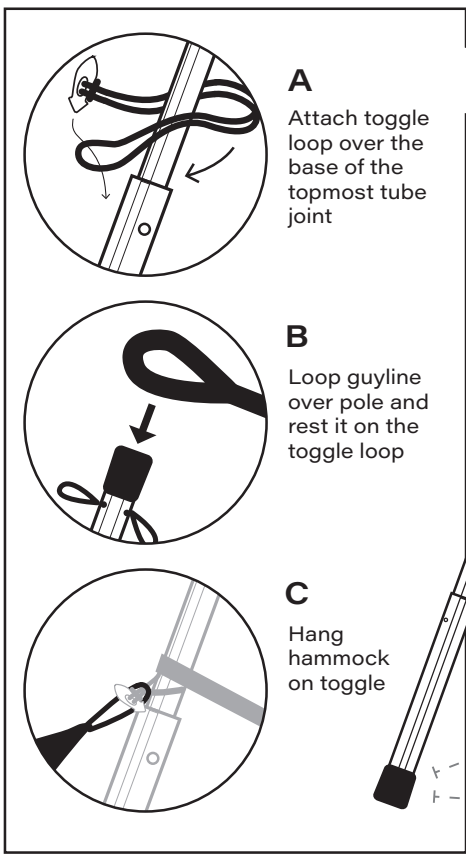
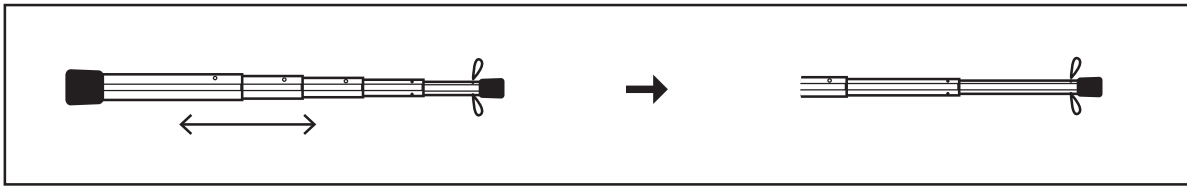
Portable Hammock Stand

Setup Instructions



1

Assemble pole



2

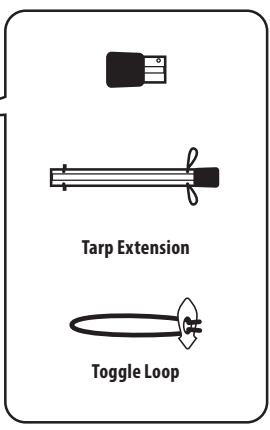
Set up guyline and anchors

Note: Orange is down, black is up.

TENSA SOLO Conversion Kit

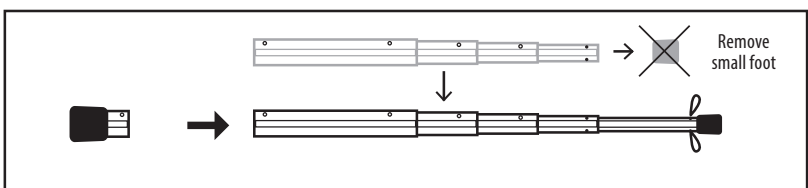
Portable Hammock Stand

Setup Instructions



1

Prepare pole



2

Go to **STEP 1** on the TENSA SOLO setup instructions



Snap this QR code for setup videos and tips



Anchoring tips

If you think the ground you'll be trying to pitch in is extremely hard or rocky, consider metal hammer-in nails, such as Tensa Boomstakes, instead of the Orange Screws we include, which work best wherever they can be driven in. It's not a matter of one being better than the other generally, but of suitability for specific conditions. More tips:

- Tie to the base of a firmly rooted woody shrub or exposed rock feature, with or without the Orange Screw reinforcing.
- Excavate any very loose soil until you uncover firmer, and drive the anchor into that.
- Hit a big rock, root, or treasure chest? Excavate enough opposite the hammock side either to tie to the object itself if massive, or to drive the anchor in behind it.
- Check your anchors between nights, repositioning if they seem loose, especially if there's been rain.
- Anchors driven further away from the stand, with longer guylines, tend to hold better than those positioned close, soil conditions being the same.
- Heavier users, or those facing exceptionally loose or soft muddy ground without reinforcing roots: use more anchors. We include only 2 per pole, but more increase holding power. Pass the guyline through the anchor heads in a manner that equalizes the load on them.